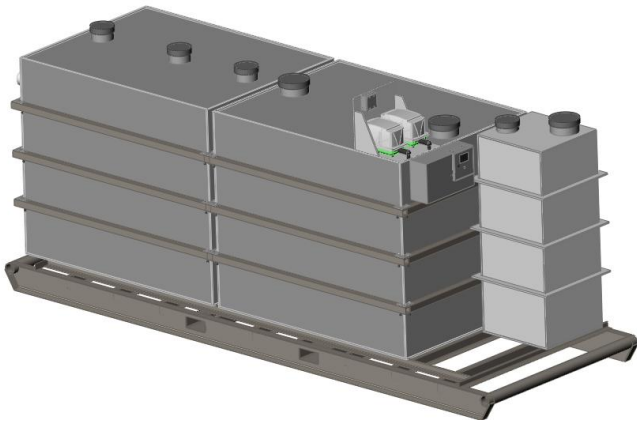




Model SST1200 Sustainable Sewage Treatment ExtremeSTP® Sewage Treatment Plant

This energy efficient, sustainable sewage treatment plant is based on residential treatment technology developed by Lifewater Engineering Company in cooperation with the Cold Climate Housing Research Center and the Denali Commission. The SST1200, which uses less than 50 percent of the energy of conventional systems, is a state-of-the-art system that meets the needs of rural Alaska. Whether you are barely beyond the municipal sewer line or far out in a remote village; whether you are on municipal power or alternative energy; the Model SST1200 is ideally suited for your small school, clinic, housing cluster, and or work camp.



Treatment Technology:

Fixed activated sludge treatment is powerful yet simple to operate and maintain. Wastewater is pretreated in a settling compartment. Then aerobic bacteria oxidize the organic contaminants and ultraviolet light disinfects the treated water. Clean water is stored in a third compartment until it is discharged by an effluent pump.

For larger systems, we make modular fixed activated sludge and membrane treatment systems suitable for any size facility including schools, hotels, camps, subdivisions, whole villages, etc.

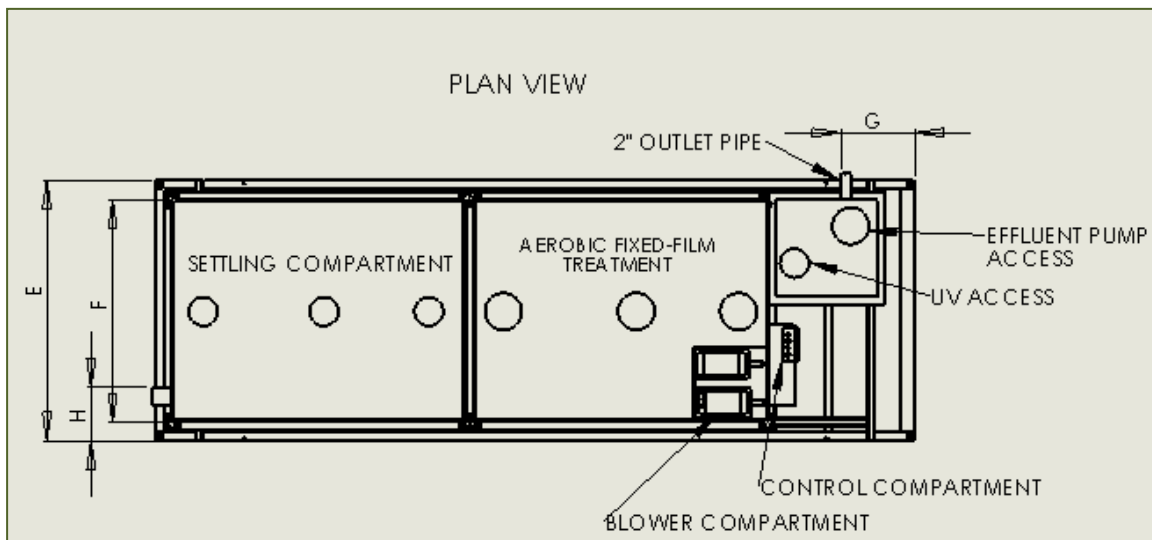
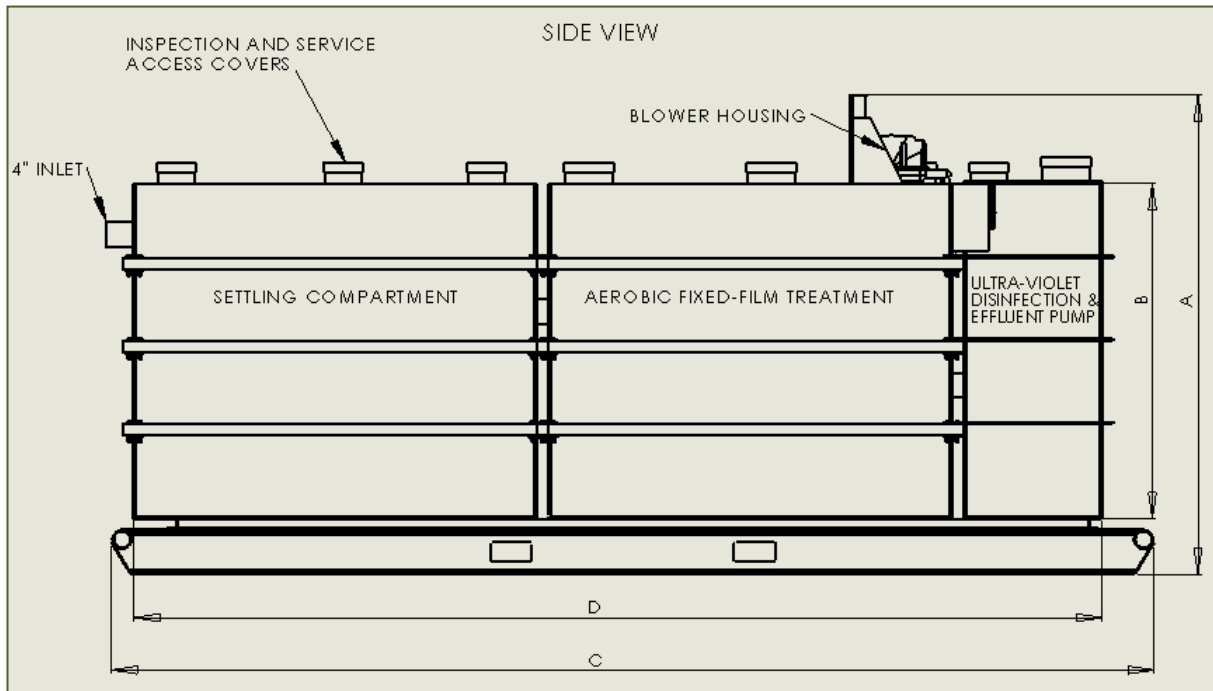
Standard Features:

- Indoor or outdoor configuration
- Suitable for an average 16-man camp, 40-student school, village clinic, etc.
- 'Plug-and-play' design makes installation simple and service easy
- System is optimized for energy efficiency
- Heavy duty, non-corrodible, plastic tank
- Outdoor model is fully insulated for use anywhere in Alaska or Canada
- Indoor model is totally sealed and set for easy venting to the outdoors
- Effluent pump prevents icing at the point of discharge
- UV disinfection is chemical-free
- Commercial systems come with a 1-year warranty
- Sized for air-transport to remote communities

Options:

- Remote alarm system that operates on a cellular phone network
- Insulated/heated influent lift station
- Thermosyphon to keep permafrost frozen
- Larger and smaller sized systems

Lifewater Engineering Company has been designing and manufacturing sewage treatment plants for cold climates since 1999



Dimension	SST1200
A	7' 2.5"
B	5' 1"
C	15' 8"
D	14' 7"
E	5' 4.5"
F	4' 7"
G	1' 5"
H	11"